

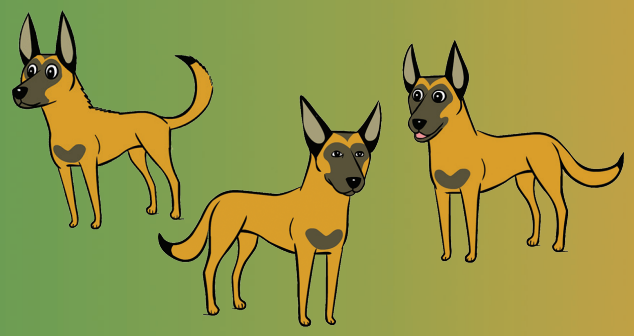
# Canine FAS Sedation – Pain Algorithm



## DOG PRESENTS FOR EXAMINATION

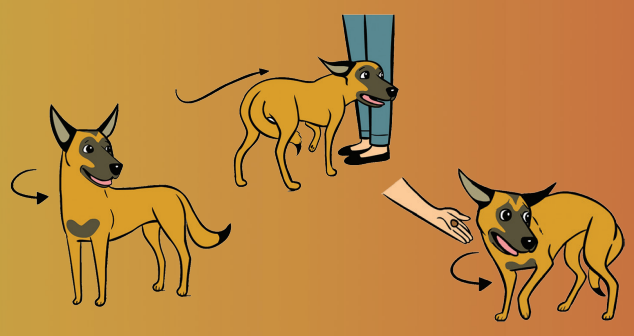
### FAS 0-1

Dog is relaxed or has subtle signs of FAS, readily accepts toys, treats, attention.



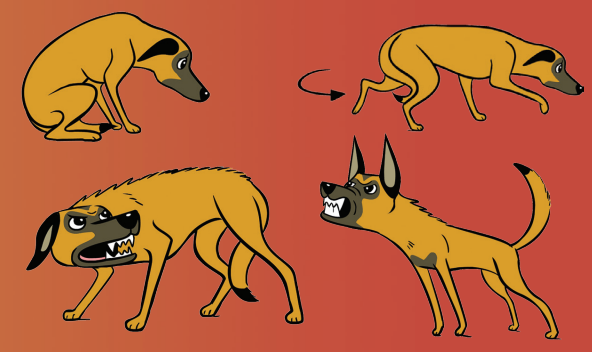
### FAS 2-3

Dog is fidgeting, has difficulty settling, little to moderate interest in toys, treats, attention.



### FAS 4-5

Dog shows little to no interest in treats, toys, and/or attention. Fight, freeze, flight response.



Continue with the examination as long as the dog remains relaxed. If dog begins to resist...

Proceed cautiously if dog struggles for more than 3 seconds, stop and give the dog a break

Or reschedule for another day and prescribe pre-visit pharmaceutical (PVP)

Dog stops struggling

Dog continues to struggle

Sedate

Continue/complete exam

Consider PVPs for future visits

Please Continue page 2

- Alprazolam 0.02-0.10 mg/kg PO OR
- Diazepam 0.5-2.0 mg/kg PO OR
- Lorazepam 0.02-0.1 mg/kg PO OR
- Gabapentin 10-40 mg/kg PO OR
- Trazodone 3-10 mg/kg PO

# Canine Sedation Protocols Healthy Patients

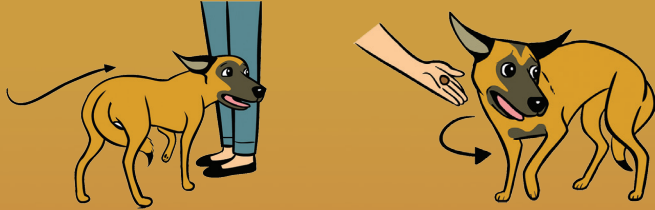
## Things you need to know about...



FAS 2-3

MILD PAIN

Dexmedetomidine 1-3 mcg/kg IV or 3-10 mcg/kg IM  
OR Acepromazine 0.01-0.03 mg/kg IM or  
IV with Midazolam 0.2 mg/kg IM or IV

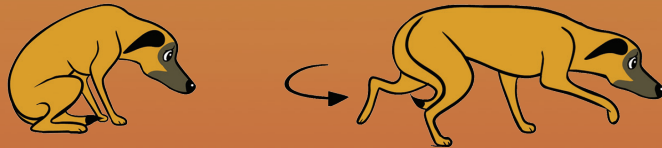


Buprenorphine 0.02-0.03 mg/kg IM or IV, OR  
Hydromorphone 0.05-0.2 mg/kg IM or IV, OR  
Morphine 0.3-2.0 mg/kg IM;  
0.1-0.5 mg/kg IV

FAS 3-4

MODERATE PAIN

Dexmedetomidine 3-10 mcg/kg IM or IV and  
Butorphanol 0.2-0.4 mg/kg IM (If patient is painful use  
Buprenorphine or a pure mu opioid instead of Butorphanol)



(+/-) Midazolam 0.2 mg/kg IM or IV



Buprenorphine 0.02-0.03 mg/kg IM or IV, OR  
Hydromorphone 0.05-0.2 mg/kg IM or IV, OR  
Morphine 0.3-2.0 mg/kg IM;  
0.1-0.5 mg/kg IV

FAS 5

SEVERE PAIN

Dexmedetomidine 12-40 mcg/kg IM and  
Butorphanol 0.2-0.4 mg/kg IM (If patient is painful use  
Buprenorphine or a pure mu opioid instead of Butorphanol)



(+) Ketamine 1-2 mg/kg IM or 5-10 mg/kg IM for anesthesia  
(volume too high for most dogs) OR Tiletamine-Zolazepam  
1-2 mg/kg IM



Hydromorphone 0.05-0.2 mg/kg IM, OR  
Morphine 0.3-2.0 mg/kg IM